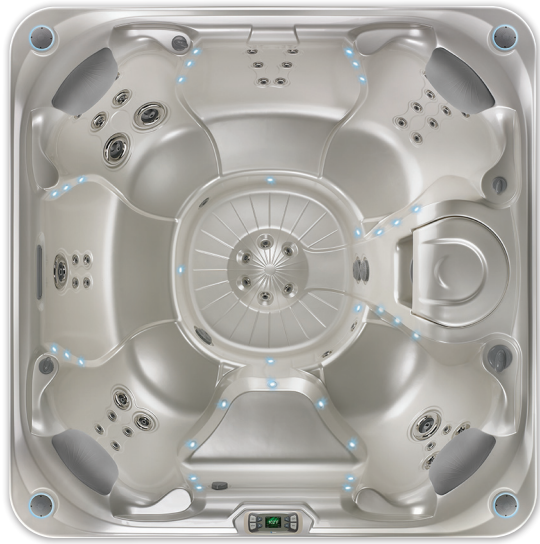


# PULSE®



Pulse shown with Pearl shell



Pulse shown with Pearl shell /  
Coastal Gray cabinet and Everwood step

<b>Seating Capacity</b>	7 adults
<b>Dimensions</b>	7'5" x 7'5" x 38" / 2.26m x 2.26m x .97m
<b>Water Capacity</b>	380 gallons / 1,438 liters
<b>Weight</b>	980 lbs. / 445 kg dry; 5,384 lbs. / 2,242 kg filled*
<b>Spa Shell Options</b>	Champagne Opal, Pearl, Sterling Marble, or Tuscan Sun
<b>Everwood® Cabinet Options</b>	Coastal Gray, Espresso, or Redwood finish
<b>Hydromassage Jets - 50 (with Stainless Steel Trim)</b>	4 Combination XL jets 6 Combination jets 40 Directional Precision® jets
<b>Waterfall</b>	Vidro® backlit ribbon waterfall
<b>Jet Pump 1</b>	Wavemaster® 9000; One-speed, 2.5 HP Continuous Duty, 5.2 HP Breakdown Torque
<b>Jet Pump 2</b>	Wavemaster® 9200; Two-speed, 2.5 HP Continuous Duty, 5.2 HP Breakdown Torque
<b>Circulation Pump</b>	SilentFlo 5000® for quiet, continuous filtration
<b>Effective Filtration Area</b>	65 sq. ft., top loading
<b>Water Care Systems (Optional)</b>	ACE® Salt Water Sanitizing System or EverFresh® System with CD ozone
<b>Control System</b>	IQ 2020® 230v/50amp, 60Hz Includes G.F.C.I. protected sub-panel
<b>Lighting System</b>	Raio® multi-color points of light (32)
<b>Heater</b>	No-Fault®, 4000w/230v
<b>Energy Efficiency</b>	Certified to the APSP 14 National Standard and the California Energy Commission (CEC) in accordance with California law
<b>Vinyl Cover</b>	3.5" to 2.5" tapered, 2 lb. density foam core Ash, Espresso, or Rust finish
<b>Cover Lifter (Optional)</b>	CoverCradle®, CoverCradle II, Lift 'n Glide®, or UpRite®
<b>Steps (Optional)</b>	Everwood or Polymer
<b>Entertainment System (Optional)</b>	Wireless Sound System

\* Includes water and 7 adults weighing 175 lbs. each  
Export models available in 230v, 50Hz, 1500w heater



**HotSpring®**  
Every day made better®